

## The Enterprise Mobility Enabler for SMBs

### The Challenge

Productivity and competitiveness are strong drivers for businesses of any size to introduce mobility solutions. Existing offerings however, typically do not offer SMBs the kind of scale, cost or simplicity they need.

SMBs usually have limited, if any, IT resources and budget for implementing and managing solutions that enable their employees to have access to business software and information while on the move.

The use of consumer email & PIM services do not provide the expected functionality to perform essential business tasks across any mobile device and is associated with inherent risk.

As purchasing devices and implementing a provisioning process requires significant resources, a Bring Your Own Device (BYOD) approach is becoming a necessity among SMBs to enable, secure and manage a diverse set of enterprise liable devices.

### The Solution

**GO!Enterprise** - Enterprise Mobility in a Box™ is a complete enterprise mobility solution that is tailor-made to the needs of a small and medium sized business.

With a fully featured solution including free storage and access to cloud-hosted Microsoft Exchange email & PIM services, SMBs do not have to settle for a scaled down enterprise solution.

With **Enterprise Mobility in a Box™**, SMBs have secure and controlled mobile access to all their business systems and information. At the same time, the development, deployment and management of business mobile applications across all devices have never been easier.

**Enterprise Mobility in a Box™** is a plug & play solution and requires zero IT resources while specialised technical knowledge is not necessary. Everything required is provided literally "out of the Box" in a cloud installation. Furthermore, its pay-as-you-go licensing model minimises any up-front costs and ensures an exact match with the business needs.

**GO!Enterprise** - Enterprise Mobility in a Box™ is the revolutionary and innovative approach to enterprise mobility that allows small & medium businesses (up to 150 devices)<sup>1</sup> to run and manage their smartphones and tablets via the Globo cloud infrastructure.

Now, SMBs can find Enterprise Mobility products anywhere, even on the shelves of major IT retailers.

**Enterprise Mobility in a Box™** is ideal for the implementation of Bring Your Own Device (**BYOD**) policies, since it allows employee owned devices to access business data in a secure and centrally controlled manner, without imposing limitations on device configurations or on the use of personal data and applications.

**Enterprise Mobility in a Box™** is a fully featured solution which caters to the following business needs.

**Security**

**Protect your valuable business data** with built-in FIPS 140-2 validated encryption (AES-256).

**Cloud File Storage**

**Cloud File Storage of 10GB** per device, allows your employees to **store, access and share documents** from their mobile devices.

**Secure Browser**

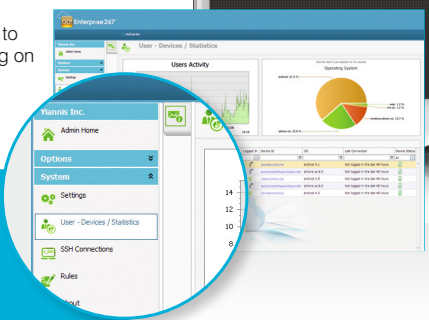
Provide employees with **secure mobile access** to Web based apps running on your intranet or the web, **without the need for VPN software**.

**Powerful Management**

**Manage your mobile workforce and secure business data and apps** through the Web based GO!Enterprise247 Administration console. **Your uncompromised Enterprise Mobility Management solution in one place.**

**App Development**

Provide access to Enterprise Apps for your employees. **GO!Development Studio will help you develop custom mobile apps** or integrate an existing enterprise app that can be deployed instantly across the major mobile platforms, increasing your productivity and competitiveness. The Studio provides secure interconnection to any back-end system / data source through Web Services (SOAP, REST, WCF) or Database connections (SQL, MySQL, Oracle).



**Messaging**

Provide **secure, one to one and group messaging among your employees** thus enhancing their responsiveness and information sharing capabilities.

**Designed for SMBs**

- Zero IT resources needed
- No specialised technical knowledge required
- Plug & Play Solution
- Minimal up-front costs and Pay-as-You-GO! license model
- Hassle-free cloud installation
- Free storage and access to cloud-hosted Microsoft Exchange email & PIM services
- Ideally suited for BYOD initiatives

**Hosted Microsoft Exchange**



Improve employee productivity through secure mobile and Microsoft Outlook access to email, calendar, contacts, notes and tasks

**powered by Hosted Microsoft Exchange**, provided at **no additional cost**. Setup and enjoy **personalised, 10GB storage, anti-virus and anti-spam powered Microsoft Exchange user accounts** that are accessible from mobile devices, web browsers (OWA) and email clients (MS Outlook).

## Enterprise Mobility in a Box™ Components

**GO!Enterprise Mobile Client** is a mobile application that can be downloaded from all major mobile application stores (Google Play, Apple App Store, Windows Phone Store, Blackberry App World). For the user, it is a secure encrypted container that separates business and personal data whereas for system administrators, it is a fully controlled environment that enables secure authentication, centralised application distribution and configuration management.

**GO!Enterprise247** is a versatile cloud service that enables secure communication with back-end systems, data synchronisation and enterprise-grade mobile application management. GO!Enterprise247 encompasses a hosted Microsoft Exchange service and data storage enabling secure access to your files, emails and PIM data.

**GO!Development Studio** is a powerful integrated development environment (IDE) for rapid visual development of GO!Apps. It enables codeless development of GO!Apps providing out-of-the-box connectors to back-end systems using web services, native database connections or RSS, so that there is virtually no system which a GO!App cannot connect to.

Using the GO!Development Studio, developers can focus on the functionality of their apps and rest assured that the interface will be automatically rendered on any mobile device with a native look & feel. GO!Development Studio empowers a build once, run anywhere approach to mobile app development.

## No Need for Additional MDM or MAM

All mobile apps and their data reside in a secure managed container

User and device provisioning is centralised and fully automated

Custom add-on apps can be centrally distributed and updated

Security policies can be enforced per user, app, device, network or connection type

Access is provided only to authenticated users with authorised devices


Each user has to provide a username and a password in order to log in to GO!Enterprise

Access to specific applications can be granted according to the type of connection (WiFi or cellular) or the network used

Remote lock & wipe can be applied on business apps and data only

Logging of user activity



Supported platforms 



## Pay as you GO! Licensing:

A simplified license scheme has been created to incorporate all product aspects and the unique features of this solution.

**GO!Enterprise247 Value Pack** includes:

- 10 GO!Enterprise247 annual device licenses
- 10 Hosted MS Exchange email accounts  
<yourname>@<yourcompany>.247.mobi
- 10 GB hosted storage (emails and files) per license
- GO!Development Studio

**GO!Enterprise247** license for additional devices:

- Expand your business (up to 150 deployed device licenses) starting from one additional license; every additional GO!Enterprise247 license includes 1 hosted MS Exchange email account and 10 GB hosted storage
- Expand your hosted storage with additional storage packages
- Get support packages when needed

## Up and Running in a few clicks:

Using the provided Activation Key you can complete the activation process within a few minutes in six easy steps.

**GO! Enterprise 247**™  
ENTERPRISE MOBILITY **in a Box**™

**Step 1/6**

License > Exchange Server settings > Manage users > Preview > Activation process > Setup complete

**Activate your license**

Please enter your 16 digit DLP Activation Key and click to validate

**Validate**

**5ign** Type the code shown:

[Show another code](#)

### Annotations

- a** **Minimum supported operating systems:** Android 2.2, iOS 5.1, Blackberry 6, Windows Phone 7.5
- b** **Cloud storage of 10GB applies to each device license** and is shared between the Hosted Microsoft Exchange Account and File Storage.
- c** **Secure Browser** functionality is available on iOS and Android devices.
- d** **<yourname>@<yourcompany>.247.mobi** account format included. **<yourname>@<yourcompany>.com** email accounts are configurable upon ownership of your domain name.
- e** Up to **5 custom apps** per device are allowed. Fair usage policy of 2GB of data traffic per app applies.
- f** **Enterprise Mobility in a Box™** can support up to 150 devices, when additional mobile device licenses are purchased.

"GLOBO Enterprise Mobility in a Box" is a registered trademark of GLOBO.  
All brands, products and logos used are registered trademarks of their respective manufacturers and companies.



London | New York | Dubai | Singapore | Athens | Limassol | Bucharest  
[globopl.com](http://globopl.com) | [goenterprise247.com](http://goenterprise247.com) | [info@globopl.com](mailto:info@globopl.com)